



24 Mablethorpe Road

, Portsmouth, PO6 3LJ

Asking price £290,000

****Chain Free**** | 3 Bedroom Family Home | Driveway for 2 Cars | Large South Facing Garden | Well Presented | White Goods Included | Close to Local Amenities | Good Transport Links | Close the QA Hospital | Perfect for Families

- 3 Bedroom Family Home
- Driveway for 2 Cars
- Large South Facing Garden
- Well Presented
- White Goods Included
- Close to Local Amenities
- Good Transport Links
- Close the QA Hospital
- Perfect for Families

Viewing

Please contact our ROK Marsh Office on 02393233267 if you wish to arrange a viewing appointment for this property or require further information.



Floor Plan

Area Map

Mablethorpe Road, PO6

Approximate Gross Internal Area = 86.9 sq m / 935 sq ft
Sheds = 5.7 sq m / 61 sq ft
Total = 92.6 sq m / 996 sq ft

(Not Shown In Actual Location / Orientation)

(Not Shown In Actual Location / Orientation)

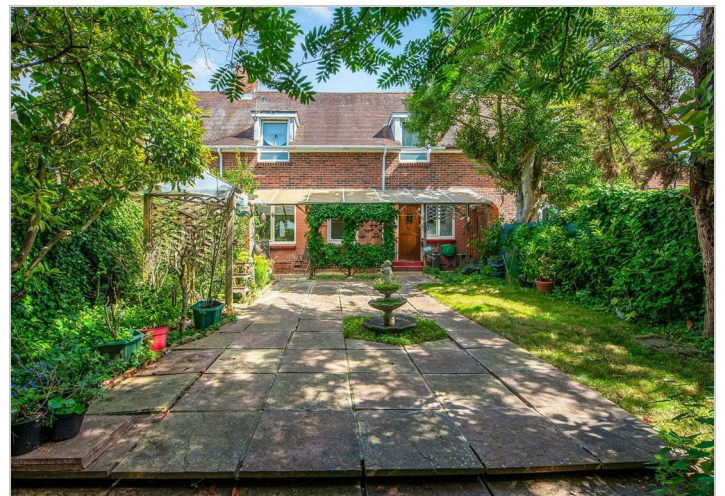
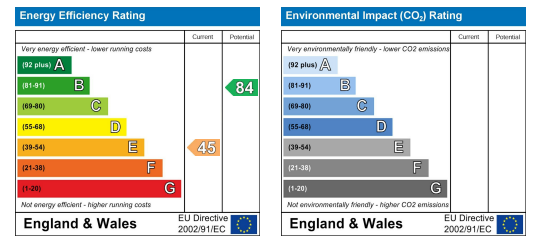
Ground Floor

First Floor

PRODUCED FOR ROK MARSH
Whilst every attempt has been made to ensure the accuracy of the floorplan, measurements of doors, windows and rooms are approximate. These plans are for representation purposes only as defined by RICS Code of Measuring Practice and used as such by any prospective purchaser. (ID1311642)



Energy Efficiency Graph



These particulars, whilst believed to be accurate are set out as a general outline only for guidance and do not constitute any part of an offer or contract. Intending purchasers should not rely on them as statements of representation of fact, but must satisfy themselves by inspection or otherwise as to their accuracy. No person in this firm's employment has the authority to make or give any representation or warranty in respect of the property.